

Technical data sheet
(Jan. 2018)

LT 12 PLUS RD Additional weights

MiDi
C R A N E S

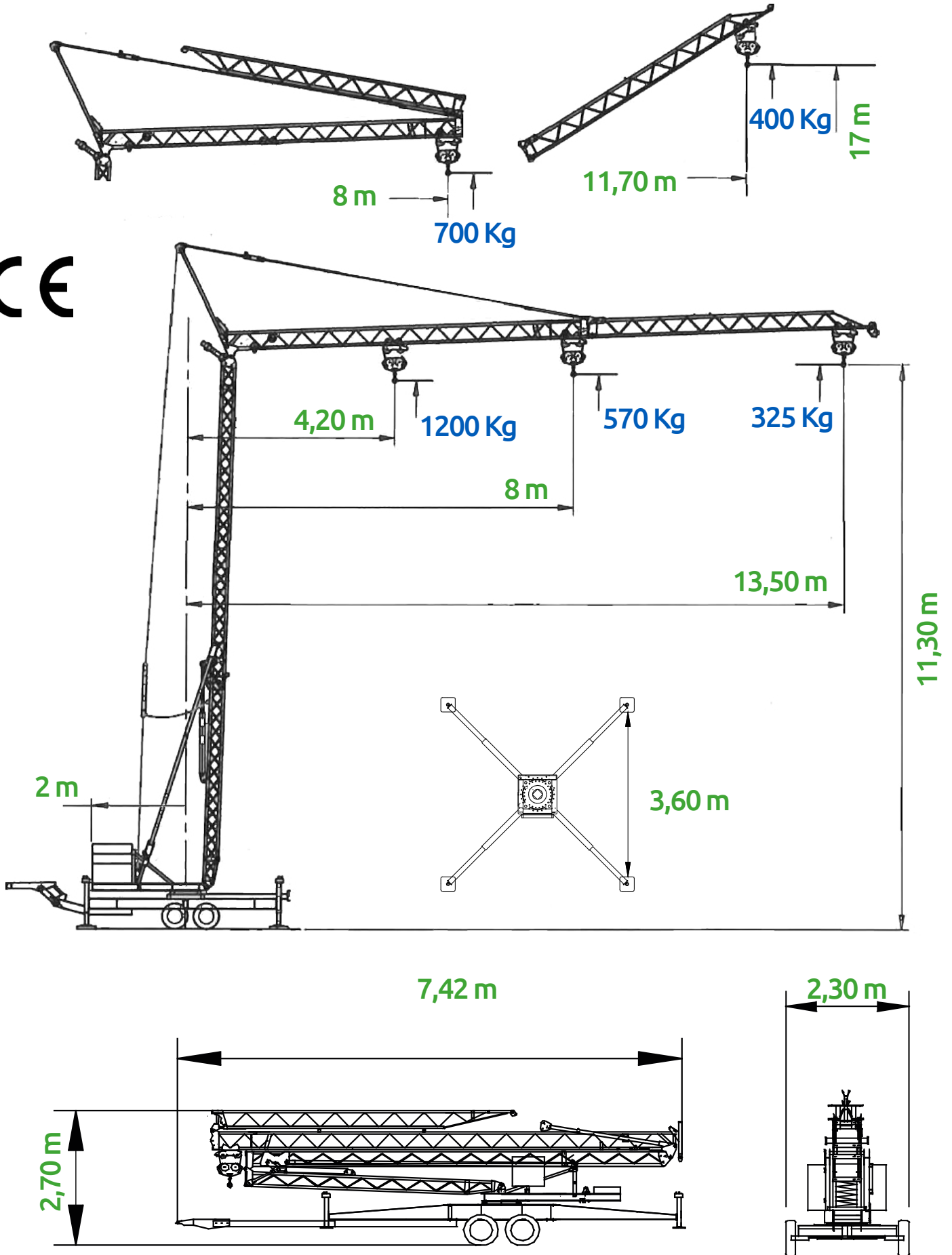
With additionnal working weights



FAST SELF-ERECTING CRANE MIDI LT 12 PLUS RD



CE



FAST SELF-ERECTING CRANE MIDI LT 12 PLUS RD



ENGINES (220 V)

Elevation	3,0 HP	three-phased
Rotation	0,5 HP	three-phased
Trolley	0,75 HP	single-phased
Hydraulic	1,0 HP	single-phased



MAIN CHARACTERISTICS

HORIZONTAL BOOM

TILTED BOOM (30°)

Electrical voltage - single-phased	220 V
Required power	3000 W
Boom / Hook heights	12 / 11,30 m 17,60 / 17 m
Maximum range	13,50 m 11,70 m
Maximum load at end of the boom	325 Kg 400 Kg
Maximum load	1200 Kg 650 Kg
Range at maximum load	4,20 m 7 m
Counterweights	1930 Kg (lest fixe 900 Kg)
Weight without counterweights	2570 Kg
Distance between levelling stabilizers	3,60 m
Turning radius at base	2 m
Lenght with with folded boom	8 m
Load at end of the boom with folded boom	700 Kg
Electrial cabinet with stop buttons	
Frequency converter for rotation and elevation	
2 elevation speeds	8 mpm - 16 mpm
Hydraulique mounting for boom and tower	

LOAD DIAGRAM

RANGE (m)		4,20	5	6	7	8	9	10	11	12	13	13,50
Horizontal boom		1200	980	790	665	570	500	445	400	360	340	325
Tilted boom 30°	Kg	650	650	650	650	570	500	445	400	-	-	-
Folded boom		1200	1200	1000	800	700	-	-	-	-	-	-

SAFETY FEATURES

- Maximum load limiter
- Inertia moment limiter
- Trolley travelling limiter
- Hook travelling limiter
- Rotation limiter
- 2nd speed limiter
- Fall-protection device of the trolley with folded boom

MiDi

C R A N E S

l i f t i n g e a s y



Z.I N° 3 - 58 route de l'Isle d'Espagnac - B.P. 90553 - 16160 GOND-PONTOUVRE - Tél : 05 45 68 24 33 - Fax : 05 45 69 01 13

Société par actions simplifiée au capital de 150 000 € - R.C.S. ANGOULÊME B 306 216 235 - C.C.P. 2989 32 V BORDEAUX

Z.A Saltgourde - 24430 MARSAC S/ISLE - Tél : 05 53 04 87 22 - Fax : 05 53 04 79 32
Av. Louis Lumière - Z.I. Périgny 17180 PÉRIGNY - Tél : 05 46 44 48 93 - Fax : 05 46 44 13 24
8A, rue Georges Claude - Z.A. - 17640 VAUX S/MER - Tél : 05 46 23 95 25 - Fax : 05 46 23 96 11
122, cours Paul Doumer - 17100 SAINTES - Tél : 05 46 95 06 60 - Fax : 05 46 74 39 11

www.mazeau.fr

